

Pendulum Valve

Code 15 - Dust Suppression Valve



Customer Value Proposition:

The Parker Conflow Code 15 - Pendulum Valve supplies dust suppression water at belt conveyor transfer points, Chutes and Bunkers and Feeder breakers.

The valve regulates the flow of fluid by movement of a vertically hanging paddle. In its vertical, free hanging position the valve is closed. When a moving load contacts the paddle it swings away from the vertical. This movement causes a cam to rotate which opens a button valve allowing the fluid to flow.



Contact Information:

Parker Hannifin Manufacturing Ltd.
Instrumentation Products Division Europe
President Park, President Way
Sheffield S4 7UR

phone 0044 (0) 114 224 0000
sales@conflow.com

www.parker.com/ipd
www.conflow.com

Product Features:

- Valve regulates the flow of liquid by movement of a vertically hanging paddle
- Valve opens only when pendulum is moved from vertical position
- Available in 1/2" size
- Maximum working pressure 105 bar
- Adjustable cam to control on/off limits
- Adjustable pendulum length
- Fire resistant paddle

Typical Application:

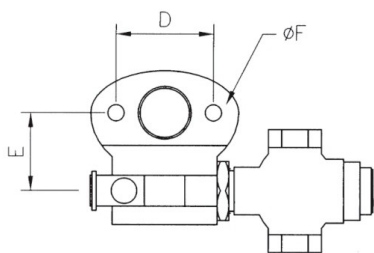
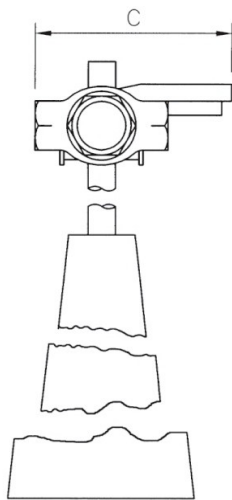
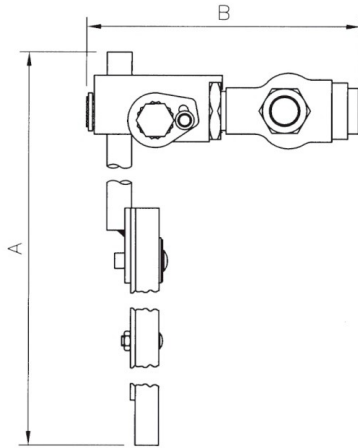
- Heavy duty construction ideal for mineral processing.



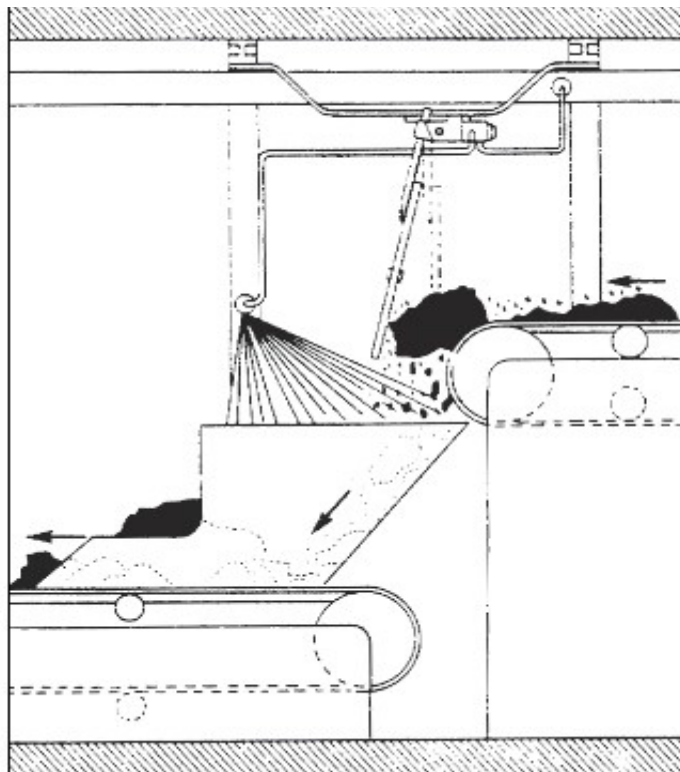
ENGINEERING YOUR SUCCESS.

Technical Information

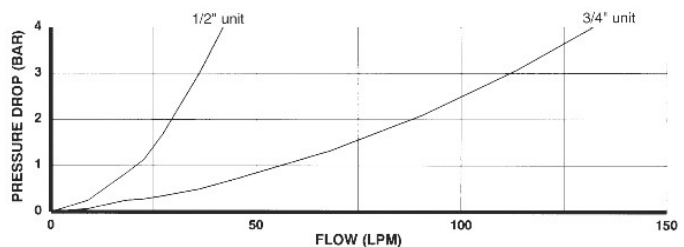
Pendulum Valve - Code 15



	1/2" Unit
A (mm)	650 to 975
B (mm)	235
C (mm)	117
D (mm)	95.25
E (mm)	56
ØF (mm)	14
Weight (kg)	8



Liquid flow regulation by Pendulum Valve.



The information on this data sheet is accurate to the best of Parker Conflow's knowledge, however we reserve the right to alter the product specification at any time. For any specific updated detail, please contact us.

© 2018 Parker Hannifin Corporation

Code 15 January 2018



Parker Hannifin Manufacturing Ltd.
Instrumentation Products Division
Europe

President Park, President Way
 Sheffield S4 7UR
 phone +44 (0) 114 224 0000
 www.parker.com/ipd